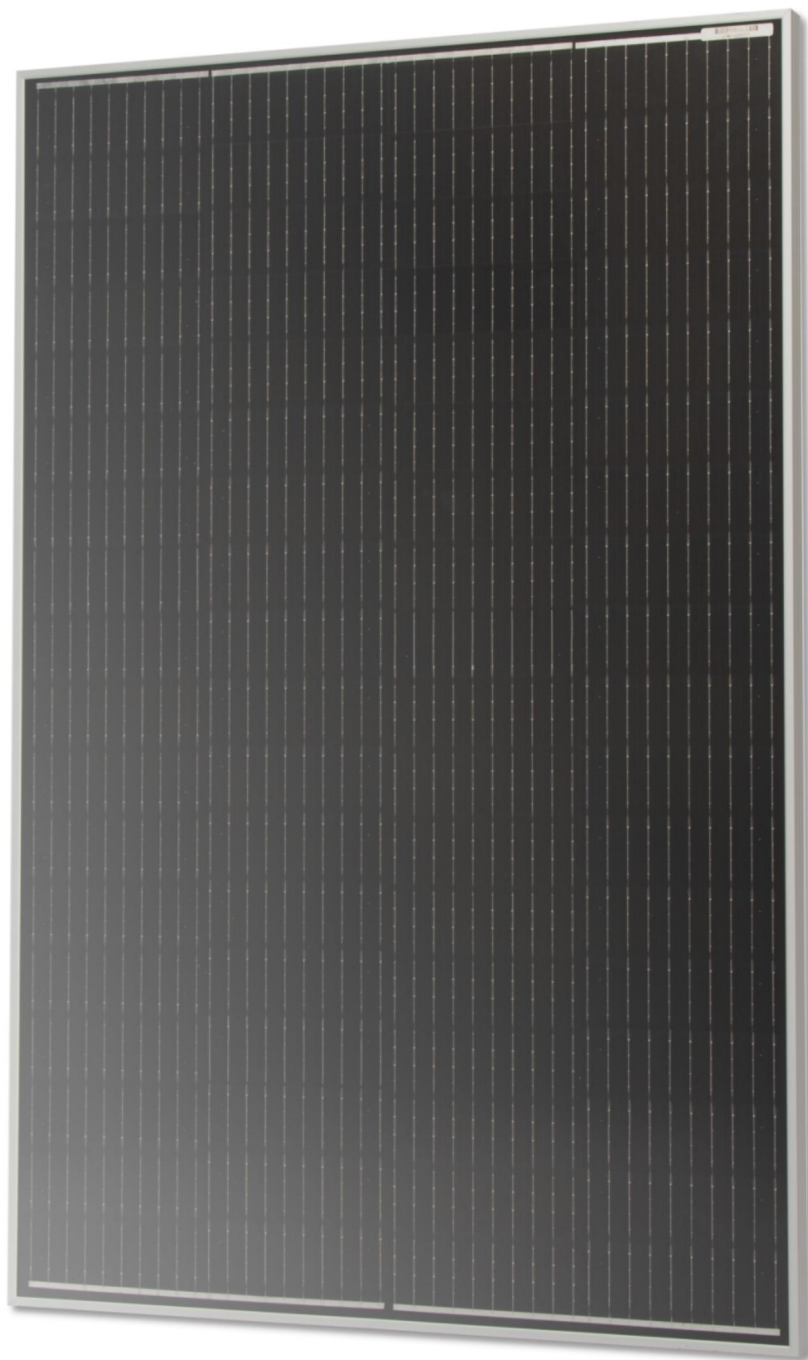


# KING KONG NR SERIES SOLAR PANELS

GSMO-YPSS145-45A

145W45V

Grade A high-efficiency  
monocrystalline silicon  
laminated solar panel



XI'AN GO SOLARV NEW ENERGY  
TECHNOLOGY CO., LTD.

Committed to diverse applications of PV

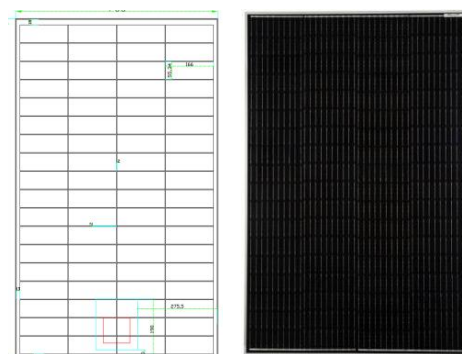


# GSMO-YBSS145-45A

# 145W45V

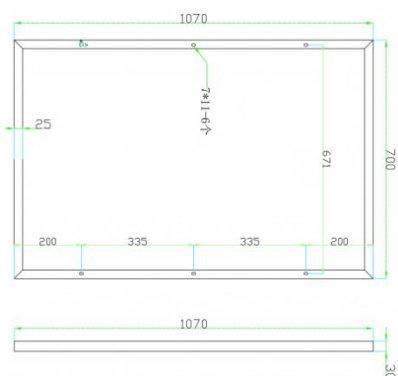
# PERC

The Kingkong NR Series modules are standard monocrystalline solar panels, integrating high-efficiency PERC monocrystalline cells with a conversion efficiency of over 23%. Encapsulated in 3.2mm ultra-clear tempered glass, these panels benefit from a mature manufacturing process, ensuring stable power output and exceptional durability. Under standard test conditions (STC), the power retention rate is guaranteed to be  $\geq 90\%$  after 10 years and  $\geq 80\%$  after 20 years.



## MECHANICAL PARAMETERS

Cells configuration	4x18
Junction box	Single-cell junction box, Two diodes
Output Cables	Customized according to requirements
Glass Type	3.2mm Tempering, Ultra white
Frame	Anodized aluminum alloy frame
Net weight	7.5Kg
Size	1070*700*30mm



## ELECTRICAL PERFORMANCE PARAMETERS

Cell type	PERC Monocrystalline
Model	GSMO-YPSS145-45A
Standard power	147.32W
Peak voltage (Vmp)	45.32V
Peak Current (Imp)	3.25A
Open Circuit Voltage	53.17V
Short Circuit Current	3.48A
Test standards	STC : AM1.5 1000W/m <sup>2</sup> 25°C

## WORKING PARAMETERS

OTR	- 40°C — +80°C
Power Tolerance	±2%
System Voltage	DC1000V
Maximum fuse rating	10A
Nominal temperature	45±2°C
Safety Class	Class II
Fire resistance rating	Class C

## LOAD CAPACITY

Front static load	3600Pa
Rear static load	2400Pa
Hail Impact test	Diameter: 25mm, Impact speed: 23m/s

## TEMPERATURE COEFFICIENT

TC Power	- 0.30%/°C
TC Voltage	- 0.28%/°C
TC Current	+0.05%/°C



All data contained in this specification are subject to change without further notice.