



X7 SERIES MANUAL LIGHT TOWER



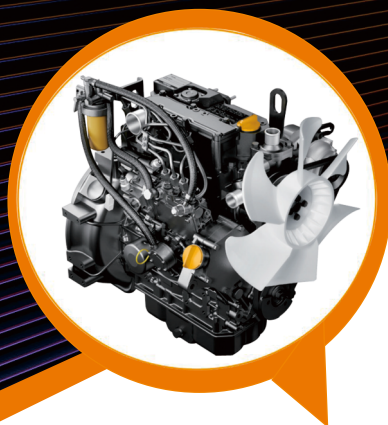
**LOW
NOISE**



**LOW FUEL
CONSUMPTION**



**LOW FAILURE
RATE**



YANMAR

► Manual Light Tower

X7 series diesel light tower is subcompact type manual vertical light tower, 7m manual light mast, 90° manual rotation for 2 light mounting tubes and 360° manual rotation for each light. It is applied in road, construction and mining, etc. It is powered by Japan Yanmar engine and Italy Mecc Alte alternator, with 4*300W or 4*350W LED. It is economic, super compact designed with super smaller size for transportation, it can be loaded up to 23 sets in a 40' high cube to save more transportation cost. This model is the most economic type and will bring you good lighting solution. If you consider energy consumption and small floor area, X7 would be great choice with competitive price.



HIGHLIGHT FEATURES



4*300W LED
180,000 Lumens

90° manual
rotation for 2 light
mounting tubes



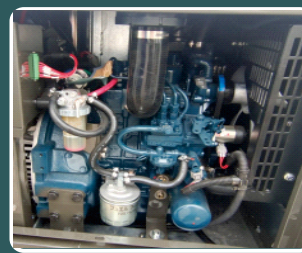
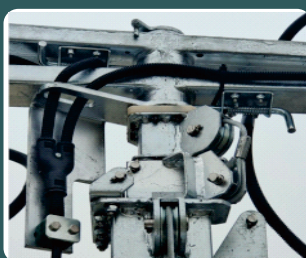
Manual
Lifting system



7 meters
Maximum height
Hot galvanizing

"I" style towing frame
with support wheel

1 front, 1 rear & 2 side
stabilizing legs



Japan Yanmar engine with Italy Mecc Alte alternator

YANMAR

meccalte

TEXAS SERIES X7 LIGHT TOWER



Standard Model		X7-R1200	X7-R1400
Dimensions	Length	2,390mm (7'10")	
	Length for loading	815mm (2'8")	
	Width	1,410mm (4'7½")	
	Height	2,740mm (9')	
	Height for loading	2,350mm (7'8½")	
	Height extended fully	7 m (23')	
	Gross weight	620 kg (1,367 lb)	
Engine	Engine model	Z482 Kubota/ 3TNM68 Yanmar	
	Engine speed(rpm)	1,500/ 1,800	
	Engine characters	2 cylinders(Z482)/ 3 cylinders(3TNM68), 4 cycles & water cooling	
	Combustion & Aspiration	IDI & naturally aspirated	
Alternator	Alternator model	LT3N-75/4 Mecc alte	
	Frequency (HZ)	50HZ/ 60HZ	
	Voltage	220/ 230/ 240-120 VAC	
	Alternator insulation	Class H &IP123	
Mast & Lights	Light	4*300 W LED	4*350 W LED
	Luminous flux	180,000 Lm	210,000 Lm
	Mast sections	5	
	Mast extension	Manual, 2,500 lb winch	
	Lighting direction	90° for 2 light mounting tubes and 360° for each light	
	Light tilt	Manual	
Trailer	Suspension & brake	750 kg leafspring axle without brake	
	Stabilizing legs	4 jacks, 1 front, 1 rear & 2 side	
	Forklift slots	4 sides forklift slots with lifting holes	
	Wheels	12" rim with regular tire	
	Tow Coupler	2" ball coupler	
	Tail reflectors	Multiple tail lights with 4 flat plug & wiring	
	Max towing speed	100 km/h (62 mph)	
General Data	Fuel tank	80 liters (21 US gal) Metal Sheet	
	Operating hours with full fuel	105 hours	97 hours
	Control system	Grandwatt Controller 1790N	
	Power receptacle	1 pcs US standard 20A	
	Max. acoustic pressure	65 dB(A) at 7 meters away	
	Max. against wind	20m/s (45 mph)	
	Max. load in 40' high cube	23	